

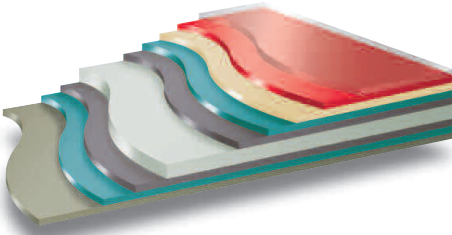


Prisma Warranty

Performance

Colorcoat Prisma® uses the unique and proven Galvalloy® metallic coating by Tata Steel. Galvalloy® is made with a special mix of 95% Zinc (Zn) and 5% Aluminium (Al) that conforms to EN 10346:2015. The carefully developed proportions of Zinc and Aluminium in Galvalloy® offers a combination of increased barrier and sacrificial protection when compared with conventional Hot Dip Galv (HDG) coatings and provides unrivalled corrosion protection, even at the cut edges.

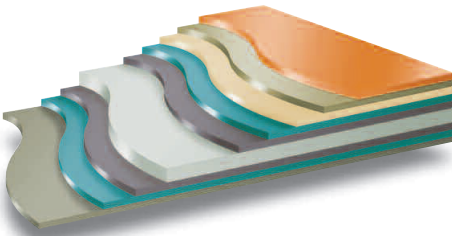
Colorcoat Prisma® Solid, Metallic & Matts



Key

■ 15µm additional protective clear layer	■ Base steel substrate
■ 25µm coloured layer with polyamide beads	■ Galvalloy® metallic coating
■ 25µm corrosion resistant primer	■ Pre-treatment
■ Pre-treatment	■ High performance backing coat
■ Galvalloy® metallic coating	

Colorcoat Prisma® Elements



Key

■ 10µm additional protective clear or coloured layer	■ Base steel substrate
■ 20µm coloured or base polymer layer	■ Galvalloy® metallic coating
■ 10µm corrosion resistant primer	■ Pre-treatment
■ Pre-treatment	■ High performance backing coat
■ Galvalloy® metallic coating	

For details and properties of Colorcoat Prisma® in a Textured finish please see dedicated literature.

Typical properties

Colorcoat Prisma®	Test Standard	
Nominal organic coating thickness		
Solids, Metallics, Matts	(µm)* 65	EN 13523-1
Elements	(µm)* 40	EN 13523-1
Specular gloss (60°):		
Solids, Metallics	(%) 25-35	EN 13523-2
Matts	(%) <10	EN 13523-2
Elements	(%) 30-40	EN 13523-2
Scratch resistance:		
Solids, Metallics, Matts	(g) >3000	EN 13523-12
Elements	(g) >2500	EN 13523-12
Abrasion resistance: (Taber CS10 2x 1kg, 250 Rev)		
Solids, Metallics, Matts	(mg) <15	EN 13523-16
Elements	(mg) <15	EN 13523-16
Flexibility:		
Minimum bend radius	(T) 0.5T@16°C	EN 13523-7
Reverse impact	(J) ≥18	EN 13523-5
Adhesion (cross hatch)	(%) 100	EN 13523-6
Pencil hardness	H	EN 13523-4
Maximum continuous operating temperature	(°C) 90	
Corrosion resistance:		
Salt spray	(h) 1000	EN 13523-8
Humidity	(h) 5000	EN 13523-25
Corrosion resistance category	RC5+	EN 10169:2022
UV category	Ruv5	EN 10169:2022
Internal environment classification	CPI5	EN 10169:2022

*µm = micron

Notes

- The figures contained in this table are typical properties and do not constitute a specification. Tested in accordance with EN 13523. For details on test methods visit www.colorcoat-online.com
- For health and safety datasheets contact the Colorcoat Connection® helpline on +44 (0) 1244 892434.

Fire performance

Reaction to fire performance

Colorcoat Prisma® including Colorcoat Prisma® Element colours have been tested to EN 13823 and EN ISO 1716 and can be classified in accordance with EN 13501-1 as A1. This classification is valid for all gauges ≥ 0.4mm for all colours in the product range for single sided product.

Performance of roof coverings

Colorcoat Prisma® including Colorcoat Prisma® Element colours are deemed to satisfy, without the need for further testing, the requirements for external fire performance of roof covering products in accordance with Commission Decision 2000/553/EC. This is valid for all gauges ≥ 0.4mm and for all colours in the product range for single and double sided products.

Peace of mind guaranteed

Confidex® Guarantee

Confidex® is the product performance guarantee for Colorcoat Prisma®, when used in an external conventional building envelope application namely roof and wall cladding using single skin, built-up or composite panel construction in industrial and commercial buildings.

Confidex® offers the most comprehensive guarantee for pre-finished steel available in Europe with Colorcoat Prisma® being guaranteed for up to 40 years.

The Confidex® Guarantee is project specific and upon online registration provides a contractual relationship between Tata Steel and the building owner, meaning that in the case of a claim the contact with Tata Steel is direct rather than having to go through the supply chain, saving time and money. What's more this is transferable should the building owner change by simply filling in the form on the back of the guarantee certificate.

Who registers?

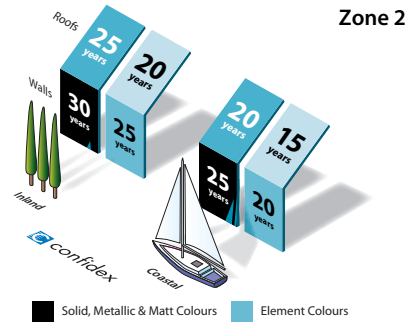
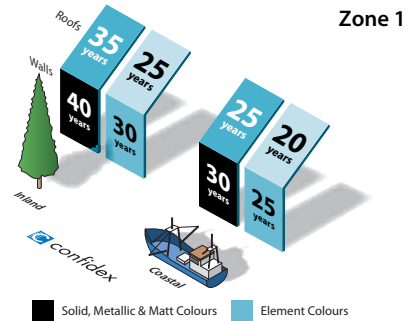
Usually the cladding contractor or the cladding system manufacturer, but anyone in the supply chain can apply online at: www.colorcoat-online.com/registration

If you want to check if your building has been registered contact the Colorcoat Connection® helpline on +44 (0) 1244 892434.



- Northern Europe – Zone 1
- Southern Europe – Zone 2
- For areas outside of Confidex® zones please contact Tata Steel for more information.

Confidex® durations



Notes

1. Figures under the Coastal heading are for buildings within 1 km of any coast.
2. Full terms and conditions of the Confidex® Guarantee are on the online application form, available at www.colorcoat-online.com/registration
3. Confidex® must be registered within 3 months of the building completion date for the guarantee to be valid.
4. The Confidex® Guarantee periods on the diagram above are applicable to Zone 1 and Zone 2. For more information on other zones visit www.colorcoat-online.com/confidexmap

Colorcoat Prisma® Solid, Metallic or Matt colours now include the comprehensive Confidex® Guarantee for the pre-finished steel that is under the photovoltaic (PV) frame modules on a roof or wall. This provides the building owner with the confidence that the product is guaranteed to perform for the same duration of up to 40 years.

Breakthrough in colour

Due to the superior aesthetic properties of Colorcoat Prisma® a colour guarantee is uniquely included as part of the Confidex® Guarantee for up to 20 years in Zone 1 areas and up to 15 years in Zone 2 (see terms and conditions). This includes all 29 standard colours in the range, subject to location and use. For more information contact the Colorcoat Connection® helpline on +44 (0) 1244 892434.

Colorcoat Prisma®

Introduction

Colorcoat Prisma® demonstrates a step change by utilising cutting edge three layer manufacturing technology to create an optimised, robust, chrome free pre-finished steel product.

This development in manufacturing and extensive testing, allows us to offer Colorcoat Prisma® in a greatly enhanced range of contemporary colours and effects, including natural metal shades, Confidex® guaranteed for up to 40 years, and colour stability for up to 20 years for standard colours.

Colorcoat Prisma® not only uniquely pushes the boundaries for UV performance but also outperforms the highest European corrosion resistance standards. This makes it the ideal choice for commercial, retail, warehouse, public sector and superior aesthetic buildings that are truly built to last.

Product benefits

- 3 layer coating technology, providing enhanced aesthetics, long term performance and durability.
- Solid, Metallic, Matt and Element colours meet Ruv5 and RC5+ as per EN 10169:2022 proving excellent colour and gloss retention and corrosion resistance.
- Confidex® Guarantee for up to 40 years for the weatherside of industrial and commercial buildings with no inspection or maintenance to maintain its validity except when used on a roof or wall that has a photovoltaic (PV) installation.
- Can be used under Photovoltaic (PV) frame modules with no reduction in guarantee length ensuring all parts of the roof or wall are covered for the same duration.
- Colour guarantee included as part of the Confidex® Guarantee for standard colours.
- Optimised Galvalloy® metallic coating for ultimate corrosion resistance and cut edge protection.
- Independently tested for liberation of volatile organic compounds (VOC) against EN ISO 16000-9 and achieved an A+ rating.
- Fully REACH compliant & free of chromates including hexavalent chrome.
- Made in the UK. Certified to BES 6001 Responsible Sourcing Standard.
- Fully supports BREEAM & LEED certification.
- Robust and durable topcoat for easier handling and processing.
- Reverse side branding making traceability easy.

Special metallics



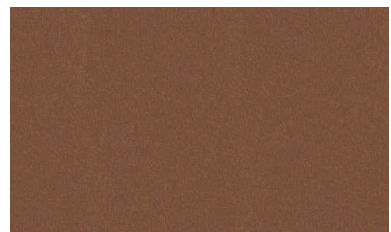
Pegasus



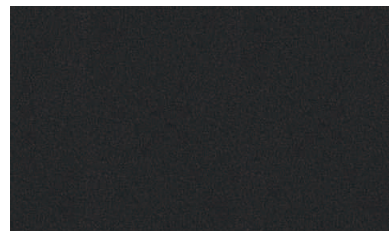
Aquarius



Atlantis



Helios

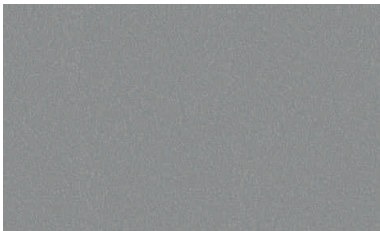


Kronos

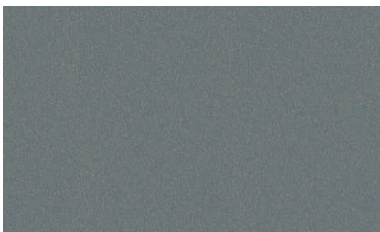
Special metallics



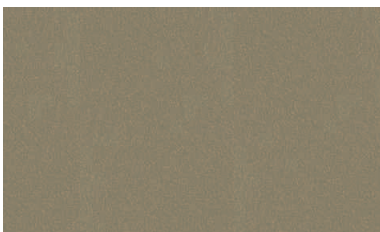
Sirius (RAL 9006)



Orion (RAL 9007)



Zeus

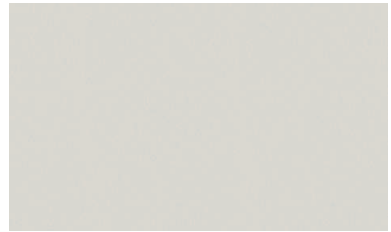


Ephyra

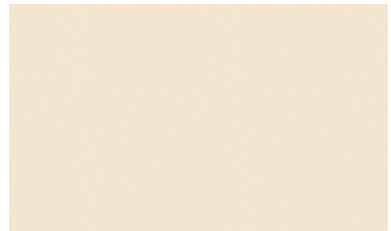


Ariana

Solid colours



Hamlet (RAL 9002)



Cream (RAL 1015)



Oxide Red† (RAL 3009)

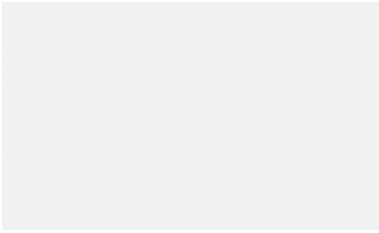


Sargasso (RAL 5003)



Black (RAL 9005)

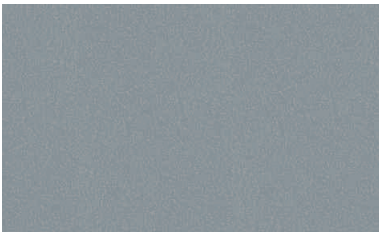
Solid colours



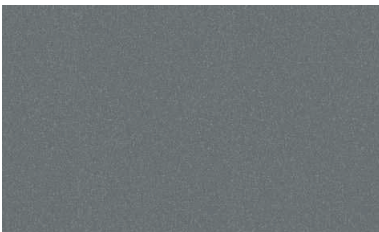
White (RAL 9010)



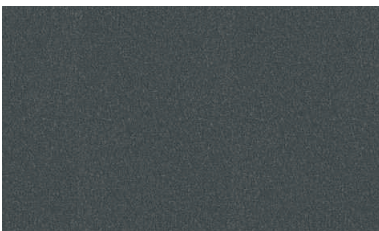
Oyster (RAL 7035)



Alaska Grey (RAL 7000)



Slate Grey (RAL 7012)

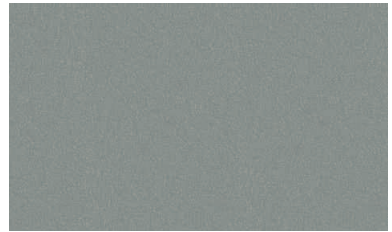


Anthracite (RAL 7016)

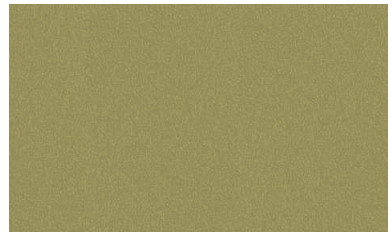
Elements



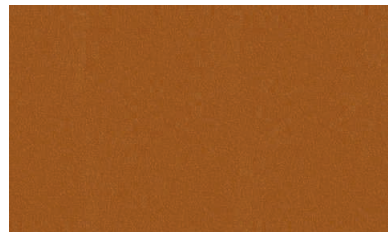
Seren White



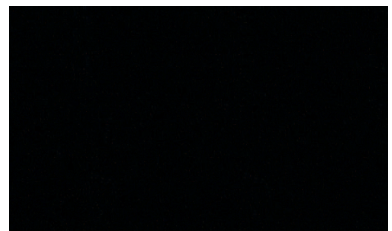
Seren Silver



Seren Gold

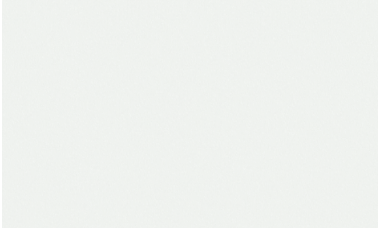


Seren Copper

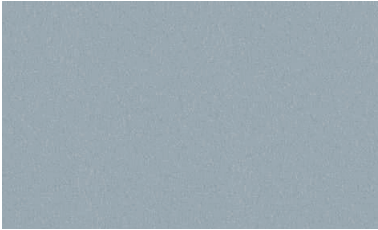


Seren Black

Matt colours



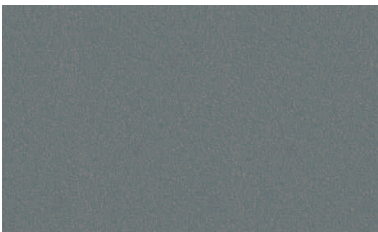
White Matt (RAL 9010)



Sirius Matt (RAL 9006)



Orion Matt (RAL 9007)



Zeus Matt

Product options

Specification

To secure the peace of mind that comes from a rigorously manufactured and world wide tested product from Tata Steel, please ensure Colorcoat® as well as the individual product name is specified: Colorcoat Prisma® by Tata Steel with Galvalloy® metallic coating.

Other colours

Due to the exceptional colour performance of Colorcoat Prisma®, other colours are available that are not shown on the colour card - these include heavily pigmented colours such as reds and oranges subject to minimum order quantities and additional costs.

Double sided option

Colorcoat Prisma® is provided with a high performance backing coat as standard, but is also available in double sided in a limited range of colours for the reverse side.

For more information please contact the Colorcoat Connection® helpline on +44 (0) 1244 892434.



For further details visit:
www.colorcoat-online.com or ring
the Colorcoat Connection® helpline
on +44 (0) 1244 892434