



# **SDP50 Warranty**

# Colorcoat® SDP 50

## The more durable alternative to PVDF (Pvf2)

Colorcoat® SDP 50 is a high-build pre-finished steel product, which provides a more durable alternative to PVDF (Pvf2) with comparable aesthetic performance.

- Lightly textured nominal 50µm coating providing improved scratch and abrasion resistance.
- Galvanised substrate produced with a metallic coating offering very good corrosion resistance.
- Available in single sided option only in eight solid colours and two metallic colours all with excellent colour and gloss retention.
- High-performance reverse side backing coat specially formulated for use in construction applications.



### Colorcoat® reassurance

The Colorcoat® brand provides the recognised mark of quality and expertise. Encompassing over fifty years of innovation, strict testing procedures and manufacturing excellence, Colorcoat® provides a range of pre-finished steel products which have been used on countless projects worldwide.

### Guarantee period

A functional guarantee of up to 25 years including 12 years factory cut edges is available in the UK and Ireland. See full terms and conditions available from the profile manufacturer. The actual duration of the guarantee will depend on the environment, geographic location and application.



### Product performance

Colorcoat® SDP 50 is carefully manufactured in a controlled process to ensure consistent quality. Colorcoat® SDP 50 is suitable for roof and wall cladding systems.

The durability of Colorcoat® SDP 50 is derived from the galvanised substrate and the high performance pre-treatment, primer and robust topcoat. This provides a greater level of durability than is available with industry standard products such as PVDF (Pvf2).

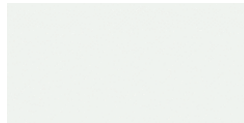
### Typical properties

Colorcoat® SDP 50	Test standard		
Nominal organic coating thickness	µm	50	EN 13523 - 1
Specular gloss (60°)	%	20 - 40	EN 13523 - 2
Scratch resistance	g	> 3000	EN 13523 - 12
Abrasion resistance (Taber, 250 rev, 1kg, CS10 wheels)	mg	< 20	EN 13523 - 16
Flexibility:			
Minimum bend radius	T	1T@16°C	EN 13523 - 7
Adhesion	T	≤ 1T	EN 13523 - 7
Corrosion resistance:			
Salt spray	hours	1000	EN 13523 - 8
Humidity	hours	1500	EN 13523 - 26
Reaction to fire classification		A1	EN 13501 - 1

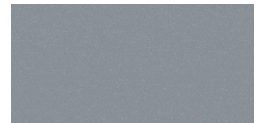
#### General notes

1. The figures contained in this table are typical properties and do not constitute a specification. These figures relate to the topcoat and solid colours. For details on test methods see [www.colorcoat-online.com](http://www.colorcoat-online.com)
2. To meet the corrosion resistance properties above, a Zinc weight of Z275g/m<sup>2</sup> or equivalent applies.

### Colour availability



White RAL 9010



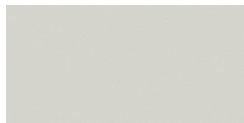
Alaska Grey RAL 7000



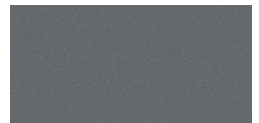
Cream RAL 1015



Dark Aluminium RAL 9007



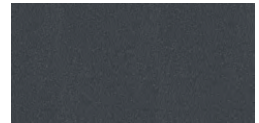
Hamlet RAL 9002



Slate Grey RAL 7012



Oyster RAL 7035



Lead Grey RAL 7016



Sterling Silver RAL 9006



Black RAL 9005

#### Notes

1. RAL reference numbers shown represent the nearest colours and are not exact matches.
2. Colours shown for Colorcoat® SDP 50 are for guidance only. For a true representation of colour and effect, please obtain product samples from Tata Steel.