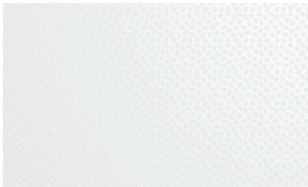


# Plastisol HPS

## Pre-finished steel for roof and wall cladding



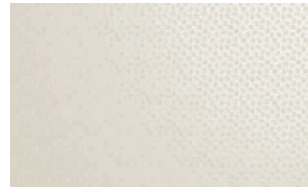
### Signature



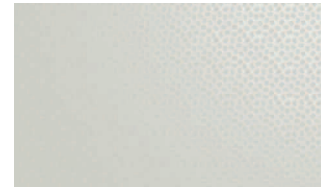
White (RAL 9003)



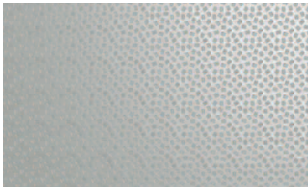
Ice Blue (RAL 230 80 10)



Marlstone (RAL 1013)



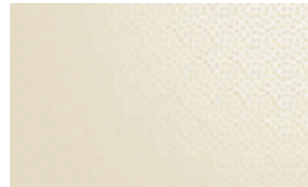
Hamlet (RAL 9002)



Goosewing Grey (RAL 7038)



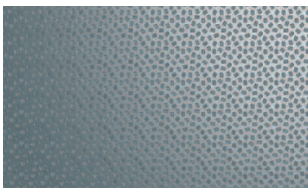
Albatross (RAL 240 80 05)



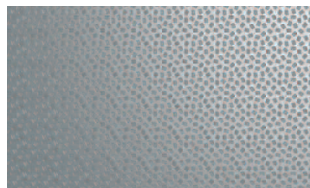
Honesty (RAL 1015)



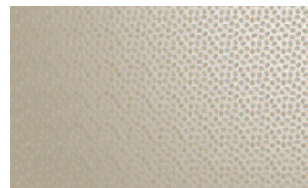
Meadowland (RAL 100 80 20)



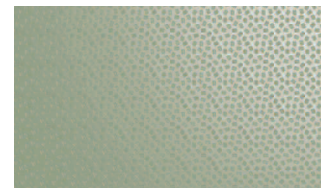
Alaska Grey (RAL 7000)



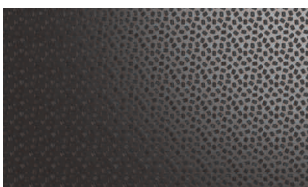
Pure Grey (RAL 000 55 00)



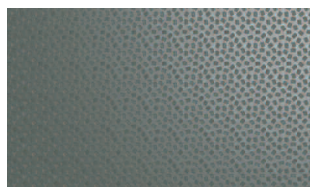
Mushroom (RAL 080 70 10)



Moorland Green (RAL 100 60 20)



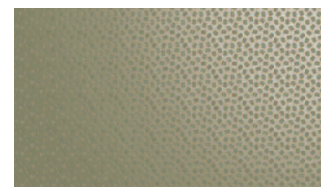
Anthracite (RAL 7016)



Merlin Grey (RAL 180 40 05)



Straw (RAL 080 70 30)



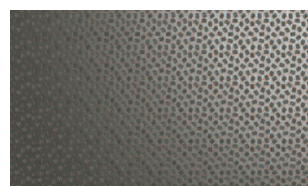
Svelte Grey (RAL 080 50 20)



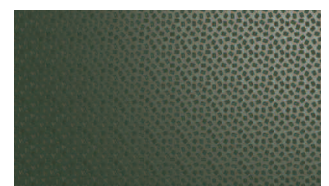
Black (RAL 9005)



Ardenne (RAL 7022)



Mole Brown (RAL 070 40 10)



Olive Green (RAL 100 30 20)

### Notes

**Colour Reference:** The standard colour references displayed above are approximate equivalents to the final product colours. Please use these as general guidelines rather than exact matches.

**Printed Colours Disclaimer:** The colours shown in print are intended for guidance purposes only and may not accurately reflect the true colour and finish of the actual product. For a precise and reliable representation of colour and finish, we recommend requesting physical product samples directly from Befab LTD.

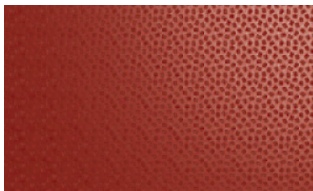
**Ensuring Exact Color Match:** If an exact color match between different components and Befab LTD stock is crucial, the best way to achieve this is by comparing with the actual cladding delivered to the site. Matching on-site helps account for any minor variations and ensures visual consistency across all elements.

# Plastisol HPS

## Pre-finished steel for roof and wall cladding



### Classics



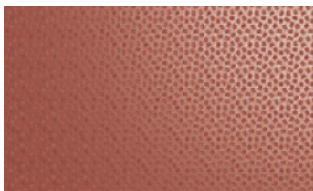
Chili (RAL 3000)



Jade (RAL 150 50 20)



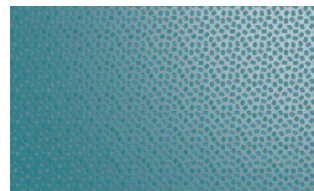
Solent Blue (RAL 240 40 40)



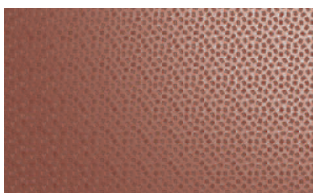
Petra (RAL 3013)



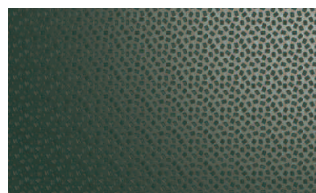
Heritage Green (RAL 6002)



Wedgewood Blue (RAL 220 50 15)



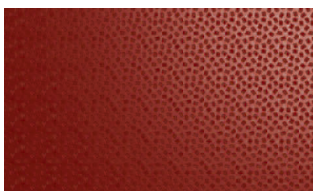
Terracotta (RAL 040 40 40)



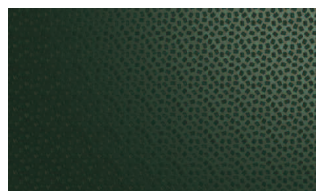
Juniper Green (RAL 140 20 10)



Ocean Blue (RAL 220 30 25)



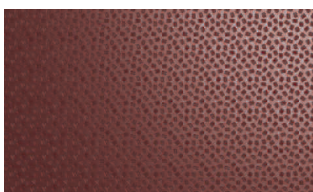
Barn Red (RAL 030 30 40)



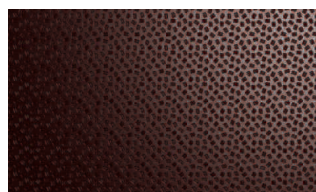
Ivy (RAL 170 20 10)



Sargasso (RAL 5003)



Burano (RAL 3004)



Van Dyke Brown (RAL 8014)

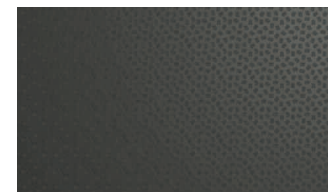


Raven (RAL 7021)

### Matts



Alaska Grey (RAL 7000)



Anthracite (RAL 7016)



Green Grey (RAL 150 40 10)



Oxidised (RAL 050 20 10)



Terracotta (RAL 040 40 40)

### Notes

**Colour Reference:** The standard colour references displayed above are approximate equivalents to the final product colours. Please use these as general guidelines rather than exact matches.

**Printed Colours Disclaimer:** The colours shown in print are intended for guidance purposes only and may not accurately reflect the true colour and finish of the actual product. For a precise and reliable representation of colour and finish, we recommend requesting physical product samples directly from Befab LTD.

**Ensuring Exact Color Match:** If an exact color match between different components and Befab LTD stock is crucial, the best way to achieve this is by comparing with the actual cladding delivered to the site. Matching on-site helps account for any minor variations and ensures visual consistency across all elements.