



# Plastisol HPS Warranty

# Exceptional performance

Designed to withstand even the most demanding and aggressive environments, Colorcoat HPS200 pre-finished steel provides super durability and corrosion resistance. Whatever your type of building, from warehouses to retail outlets to processing plants, Colorcoat HPS200 demonstrates proven performance and reliability.

## Typical properties

Colorcoat HPS200		Test standard	
Nominal organic coating thickness	( $\mu\text{m}$ )*	200	EN 13523-1
Specular gloss (60°):			
	Non-matt colours	%	20-40
Matt colours	%	<10	EN 13523-2
Scratch resistance	(g)	>5000	EN 13523-12
Abrasion resistance (Taber CS10 2x 1kg, 250 Rev)	(mg)	<12	EN 13523-16
Flexibility:			
Minimum bend radius	(T)	0T (16°C) 1T (0°C)	EN 13523-7 EN 13523-7
Reverse impact	(J)	$\geq 18$	EN 13523-5
Adhesion (cross hatch)	(%)	100	EN 13523-6
Maximum continuous operating temperature	(°C)	60	
Corrosion resistance:			
Salt spray	(h)	1000	EN 13523-8
Humidity	(h)	5000	EN 13523-25
Corrosion resistance category		RC5+	EN 10169:2022
UV resistance category		Ruv4	EN 10169:2022
Internal environment classification		CPI5	EN 10169:2022

\* $\mu\text{m}$  = micron

### Notes

- The figures contained in this table are typical properties and do not constitute a specification. Tested in accordance with EN 13523. For details on test methods visit [www.colorcoat-online.com](http://www.colorcoat-online.com)
- For health and safety datasheets contact the Colorcoat Connection® helpline on +44 (0)1244 892434.

## Super durability

Colorcoat HPS200 has been developed to perform in demanding environments – both external and internal. It has been subjected to comprehensive natural and accelerated testing, often way beyond the required standards. Colorcoat HPS200 Ultra® is used in a wide range of industrial and commercial buildings

and real-life scenarios provide further evidence of the product's super durable qualities.

Excellent test results mean that Colorcoat HPS200 is classified as a CPI5 product as per EN 10169:2022. This is the highest classified level of corrosion protection for internal environments and means that Colorcoat HPS200 is suitable for the most demanding internal applications such as swimming pools, sewage treatment plants, power stations, energy from waste and processing factories.

Today's super durable Colorcoat HPS200 comes with comprehensive guarantees and offers a sustainable solution for the building envelope where longevity and durability are imperative.

## Double sided option

To support the super durable qualities of Colorcoat HPS200 it is provided with a high performance backing coat as standard however is also available double sided. This provides a robust barrier on the reverse side of the steel substrate for buildings with demanding internal and external environments such as manufacturing plants.

## Unrivalled corrosion protection

Colorcoat HPS200 uses the unique and proven Galvalloy® metallic coating by Tata Steel. Galvalloy® is made with a special mix of 95% Zinc (Zn) and 5% Aluminium (Al) that conforms to EN 10346:2015. The carefully developed proportions of Zinc and Aluminium in Galvalloy® offers a combination of increased barrier and sacrificial protection when compared with conventional Hot Dip Galv (HDG) coatings and provides unrivalled corrosion protection, even at the cut edges.



Colorcoat HPS200 with Galvalloy® roof after 7 years.



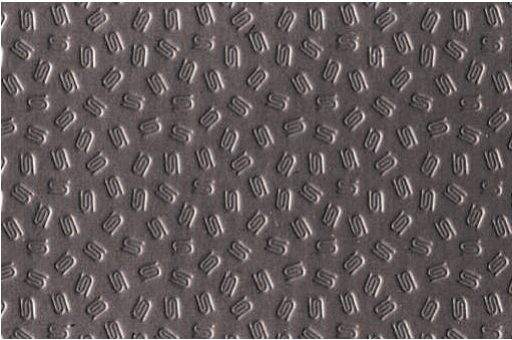
Leathergrain alternative on hot dip galvanized steel substrate roof after 7 years.

# Enduring quality

## Scintilla®

Unique to Colorcoat HPS200 the Scintilla® emboss has been developed with a depth of only nominal 50 microns, which makes it less likely to trap dirt than deeper leathergrain embosses therefore making the pre-finished steel easier to clean whilst being more robust.

Unlike leathergrain patterns the emboss is subtle and does not detract from the overall appearance of the building, looking smooth and creating a modern building appearance from a distance. The Scintilla® emboss provides a unique guarantee of authenticity and an overall thicker protective top coat from Tata Steel.



## Fire performance

### External fire performance for roof covering products

Colorcoat HPS200 when used as a roof covering can be classed as  $B_{ROOF}(t1)$ ,  $B_{ROOF}(t2)$ , and  $B_{ROOF}(t3)$  without further testing, in accordance with Commission Decision 2005/403/EC for all gauges  $\geq 0.4\text{mm}$  and for all colours in the product range for single sided and 200/100 product.

Colorcoat HPS200 has been tested to EN 1187 test method 4 and can be classified according to EN 13501-5 as  $B_{ROOF}(t4)$  for all gauges  $\geq 0.4\text{mm}$  and for all colours in the product range for all single and double sided products.

## Reaction to fire performance

Colorcoat HPS200 has been tested to EN 13823 and EN 11925-2 and can be classified in accordance with EN 13501-1 as C-s2, d0. This classification is valid for all gauges  $\geq 0.46\text{mm}$  and for all colours for single sided product.

## Made in the UK

Colorcoat HPS200 is exclusively from Befab LTD, and is fully traceable with certification to BES 6001 for Responsible Sourcing. From steel manufacture to processing, Colorcoat HPS200 uses some of the most advanced, and sustainable, technologies in the UK for high quality building products with a lower carbon footprint.



## Specification

To secure the peace of mind that comes from a rigorously manufactured and world wide tested product from Befab LTD, please ensure Colorcoat® as well as the individual product name is specified: Colorcoat HPS200.

## British Board of Agrément Certificate

The long-term performance of Colorcoat HPS200 has been recognised within BBA certificate 91/2717 as "Colorcoat HPS200 coating and metal treatment will protect the steel substrate against corrosion for a period in excess of 40 years in normal industrial, urban, suburban and rural environments."



# Peace of mind

## The Confidex® Guarantee

Confidex® is the product performance guarantee for Colorcoat HPS200, when used in an external conventional building envelope application namely roof and wall cladding using single skin, built-up or composite panel construction in industrial and commercial buildings.

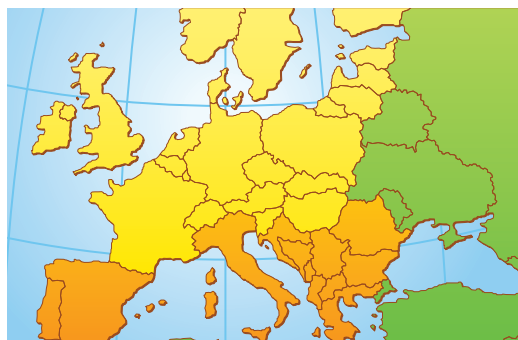
Confidex® offers the most comprehensive guarantee for pre-finished steel available in Europe with Colorcoat HPS200 being guaranteed for up to 40 years. Superior and unrivalled improvements in colour stability and gloss retention are translated into a durable product with great longevity.

The Confidex® Guarantee is project specific and upon registration provides a contractual relationship between Tata Steel and the building owner meaning that in the case of a claim the contact with Befab LTD is direct rather than having to go through the supply chain, saving time and money. What's more this is transferable should the building owner change by simply filling in the form on the back of the guarantee certificate.

### Who registers?

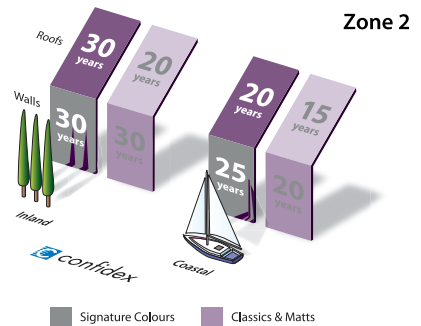
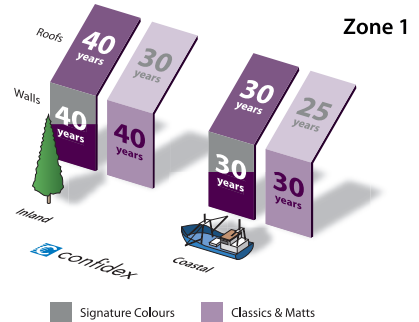
Usually the cladding contractor or the cladding system manufacturer, but anyone in the supply chain can apply online at: [www.colorcoat-online.com/registration](http://www.colorcoat-online.com/registration).

If you want to check if your building has been registered contact the Colorcoat Connection® helpline on +44 (0) 1244 892434.



■ Northern Europe – Zone 1     
 ■ Southern Europe – Zone 2  
■ For areas outside of Confidex® zones please contact Tata Steel for more information.

## Confidex® zones



### Notes

- Figures under the Coastal heading are for buildings within 1km of any coast.
- Full terms and conditions of the Confidex® Guarantee are on the online application form, available at [www.colorcoat-online.com/registration](http://www.colorcoat-online.com/registration)
- Confidex® must be registered within 3 months of the building completion date for the guarantee to be valid.
- The Confidex® Guarantee periods on the diagram above are applicable to Zone 1 and Zone 2. For more information visit [www.colorcoat-online.com/confidexmap](http://www.colorcoat-online.com/confidexmap)
- Anthracite Matt is classified as a Signature colour duration and available with a Confidex® Guarantee of up to 40 years in Zone 1 and up to 30 years in Zone 2.

### Other warranties

Whilst Confidex® has always been restricted to the weathering performance of the external cladding, we have recognised the growing emergence of demanding internal environment projects, such as energy from waste plants, and may offer a non-Confidex® warranty on a case by case basis for Colorcoat HPS200 Ultra® used internally.

Application specific warranties are also available for non-standard cladding applications; i.e flashings and sectional roller shutter doors.

Please contact the Colorcoat Connection® helpline for guarantees associated with such applications.

# Colorcoat® Colour Reference Table

Colour	BS	RAL	SRI	SSST
<b>Signature colours</b>				
Alaska Grey	*	7000	24	73.3
Albatross	18B17	240 80 05	60	59.7
Anthracite	*	7016	1	81.9
Ardenne	*	7022	5	80.6
Black	00E53	9005	0	82.9
Goosewing Grey	10A05	7038	46	65
Hamlet	*	9002	69	56.5
Honesty	10C31	1015	75	54
Ice Blue	*	230 80 10	71	55.4
Marlstone	10B15	1013	77	53.3
Meadowland	12B17	100 80 20	57	60.7
Merlin Grey	18B25	180 40 05	10	78.8
Mole Brown	*	070 40 10	11	78.2
Moorland Green	12B21	100 60 20	34	69.6
Mushroom	10B19	080 70 10	44	65.7
Olive Green	12B27	100 30 20	5	80.5
Pure Grey	*	000 55 00	19	75.2
Straw	*	080 70 30	48	64.2
Svelte Grey	10B23	080 50 20	22	74
White	00E55	9003	94	47

## Matts

Alaska Grey Matt	*	7000	23	73.7
Anthracite Matt	*	7016	1	81.9
Green Grey Matt	*	150 40 10	7	79.8
Oxidised Matt	*	050 20 10	3	81.2
Terracotta Matt	04C39	040 40 40	46	65.2

## Classics

Barn Red	*	030 30 40	35	69
Burano	*	3004	34	69.6
Chili	04E56	3000	41	66.9
Heritage Green	*	6002	6	80
Ivy	*	170 20 10	23	73.8
Jade	*	150 50 20	20	75
Juniper Green	12B29	140 20 10	2	81.7
Ocean Blue	18C39	220 30 25	8	79.3
Petra	04D44	3013	47	64.6
Raven	*	7021	0	82.4
Sargasso	*	5003	28	71.9
Solent Blue	18E53	240 40 40	33	69.9
Terracotta	04C39	040 40 40	42	66.4
Van Dyke Brown	08B29	8014	5	80.6
Wedgewood Blue	18C37	220 50 15	24	73.6

## RAL references

4 digit numbers are RAL Classic references.

7 digit numbers are RAL Design references.

British Standard or RAL reference numbers shown in the table, represent the nearest colours and are not exact matches to Colorcoat HPS200 Ultra®.

\* These colours do not have equivalent BS references.

SRI – Solar Reflective Index as per ASTM E 1980.

SSST – Steady State Surface Temperature as per ASTM E 1980.