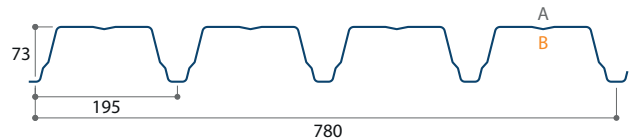
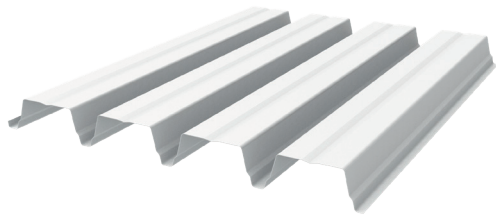


## Highdecks

# 73-195-780

The 73-195-780 is a profiled steel sheet designed for flat roofs. This warm roof sheet offers unmatched strength and stability for the roofs of industrial and tertiary buildings. This profiled steel sheet for flat roofs is available in various dimensions and can be coated on the B-side with an interior coating. Other versions are also available upon request.



Product	Thickness (mm)	Weight (kg/m <sup>2</sup> )
3095	0,75	9,21
3095	0,88	10,80
3095	1,00	12,28

### Technical characteristics

Standard length	from 500 to 13500 mm
Effective width	780 mm
Type of metal	Steel S320 GD
Coatings	Interiorcoating 912 (15 μ), Galva according to color chart MR101_Colorflow

### References

Galvanized steel	EN 10346:2015 - tolerances according to EN 10143:2006
Pre-painted steel	EN 10169:2022
Dimensions / Tolerances	EN 508-1:2021 (Geometry)
Static calculation	EN 1993-1-3:2006

### Load tables (in kN/m<sup>2</sup>)

### Static properties

tN [mm]	Weight (kg/m <sup>2</sup> )	Top flange in compression						Bottom flange in compression				
		Mc,Rk,F [kNm/m]	Mc,Rk,B [kNm/m]	I <sub>eff</sub> [cm <sup>4</sup> /m]	Vw,Rk [kN/m]	Rw,Rk,B [kN/m]	Rw,Rk, A [kN/m]	Mc,Rk,F [kNm/m]	Mc,Rk,B [kNm/m]	I <sub>eff</sub> [cm <sup>4</sup> /m]	Vw,Rk [kN/m]	Rw,Rk, A [kN/m]
0,75	9,21	5,48	5,09	76,39	73,91	31,01	13,45	5,09	5,48	77,17	73,91	73,91
0,88	10,80	6,83	6,02	91,32	101,70	43,26	18,83	6,02	6,83	91,25	101,70	101,70
1,00	12,28	8,13	6,88	105,33	131,11	56,09	24,49	6,88	8,13	104,24	131,11	131,11



## Permissible downward load (kN/m<sup>2</sup>) for span (m)

Number of fields	Thickness (mm)	Span (m)														
		2,80	3,00	3,20	3,40	3,60	3,80	4,00	4,20	4,40	4,60	4,80	5,00	5,20	5,40	5,60
Single L/200	0,75	2,81	2,28	1,88	1,57	1,32	1,12									
	0,88	3,35	2,73	2,25	1,87	1,58	1,34	1,15								
	1,00	3,87	3,15	2,59	2,16	1,82	1,55	1,33	1,15	1,00						
Double L/200	0,75	3,73	3,25	2,85	2,53	2,25	2,02	1,83	1,66	1,51	1,38	1,27	1,17	1,06		
	0,88	4,65	4,05	3,56	3,15	2,81	2,52	2,28	2,07	1,88	1,72	1,58	1,42	1,26	1,13	1,01
	1,00	5,53	4,82	4,23	3,75	3,35	3,00	2,71	2,46	2,24	2,05	1,85	1,64	1,46	1,30	1,17
Multi L/200	0,75	3,73	3,25	2,85	2,53	2,25	2,05	1,82	1,57	1,37	1,20	1,05				
	0,88	4,65	4,05	3,56	3,15	2,81	2,54	2,18	1,88	1,64	1,43	1,26	1,11			
	1,00	5,53	4,82	4,23	3,75	3,35	2,93	2,51	2,17	1,89	1,65	1,45	1,29	1,14	1,02	

The above load is the total load in Ultimate Limit State (UGT) divided by 1,5.  
 minimum support widths: 40 mm for end supports - 60 mm for intermediate supports.  
 The load tables are limited by a maintenance load of 1,00 kN/m<sup>2</sup> or 1,50 kN/m.



## Permissible upward load (kN/m<sup>2</sup>) for span (m)

Number of fields	Thickness (mm)	Span (m)														
		2,80	3,00	3,20	3,40	3,60	3,80	4,00	4,20	4,40	4,60	4,80	5,00	5,20	5,40	5,60
Single L/150	0,75	3,46	3,02	2,53	2,11	1,78	1,51	1,30	1,12	0,97	0,85	0,75	0,66	0,59	0,53	0,47
	0,88	4,09	3,57	2,99	2,50	2,10	1,79	1,53	1,32	1,15	1,01	0,89	0,78	0,70	0,62	0,56
	1,00	4,68	4,07	3,42	2,85	2,40	2,04	1,75	1,51	1,32	1,15	1,01	0,90	0,80	0,71	0,64
Double L/150	0,75	3,73	3,25	2,85	2,53	2,25	2,02	1,83	1,66	1,51	1,38	1,27	1,17	1,08	1,00	0,93
	0,88	4,65	4,05	3,56	3,15	2,81	2,52	2,28	2,07	1,88	1,72	1,58	1,46	1,35	1,25	1,16
	1,00	5,53	4,82	4,23	3,75	3,35	3,00	2,71	2,46	2,24	2,05	1,88	1,73	1,60	1,49	1,38
Multi L/150	0,75	4,66	4,06	3,57	3,16	2,82	2,53	2,28	2,07	1,84	1,61	1,42	1,26	1,12	1,00	0,89
	0,88	5,81	5,06	4,45	3,94	3,51	3,15	2,85	2,50	2,18	1,91	1,68	1,48	1,32	1,18	1,06
	1,00	6,91	6,02	5,29	4,69	4,18	3,75	3,31	2,86	2,49	2,18	1,92	1,70	1,51	1,35	1,21

The above load is the total load in Ultimate Limit State (UGT) divided by 1,5.  
 Minimum support widths: 40 mm for end supports - 60 mm for intermediate supports